



Z178.720-2===

Accessories

B016.730



Battery pack 30Ah AGM

B018.740



Battery pack 37/45Ah AGM

B151.740===



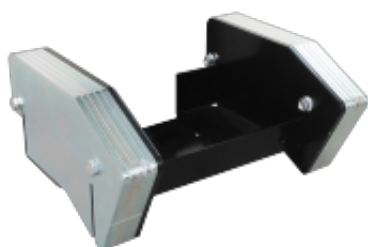
Lithium battery pack 40Ah

Z524.712



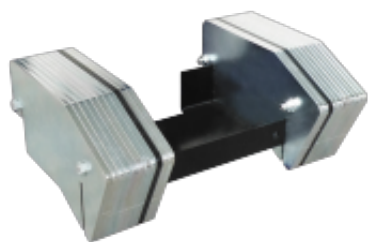
Fitting kit for 30Ah, 45Ah and Lithium battery pack

Z524.720



Ballasts kit 54.5 kg for 33Ah, 45Ah and Lithium batteries for M1 and M12

Z524.721



Ballasts kit 94.5 kg for 33Ah, 45Ah and Lithium batteries for M12

E564.712===



Led strobe light

E506.750===



Key Pad on/off

E204.700===



Assembled hour meter

M970.700



Tilt adjustment lever

DR209.112-2



Upgrade to non-marking wheels (2 wheels)

Z172.723===



Front & rear wheels guard

ZG10.021.720===



Pivoting connection 35 x 35 mm

ZG20.020.720



Roll box hitch

A120.705-10===



Connection with 3 wheels

A190.720===



Galvanized Bin Hitch

ZG10.002.700===



Tow ball coupling

ZG10.001.700===



Pin hitch Ø16 mm